

Company Profile



LANA AL-ARABIA CONTRACTING EST.

مؤسسة لنا العربية للمقاولات العامة



رؤية VISION
2030
المملكة العربية السعودية
KINGDOM OF SAUDI ARABIA

Your Vision, Our Commitment
Reliable Solutions for Every Industrial Need



INTRODUCTION

Lana Al-Arabia Contracting Est. is a 100% Saudi-owned and officially registered company based in the Kingdom of Saudi Arabia. With a strong footprint across different regions of the country, we have earned a solid reputation for delivering complete and reliable contracting services.

Our operations are structured into specialized divisions, including Construction, Civil Engineering, and Project Management. By combining advanced equipment with the latest technology, we ensure high-quality service delivery that is tailored to meet each client's specific requirements.

We are committed to achieving outstanding results—delivering solutions that are efficient, on schedule, and within budget. Our experienced team is always exploring new industry trends and innovations to offer creative, client-focused services. This forward-thinking approach helps us stand out in the highly competitive contracting industry in Saudi Arabia.

SERVICES OFFERED BY US

01

Mechanical Services:

- Fabrication of carbon steel and stainless steel storage tanks, pressure vessels, and boilers
- Fabrication of steel structures, including PEB, medium, and heavy steel structures
- Fabrication of carbon steel and stainless steel piping
- Surface preparation through blasting and painting as per SES, APCS, and other relevant standards
- Installation and erection of mechanical equipment
- General trading



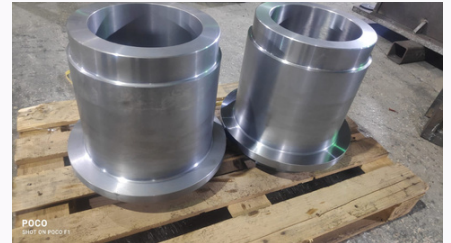
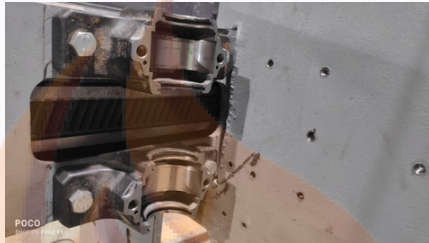
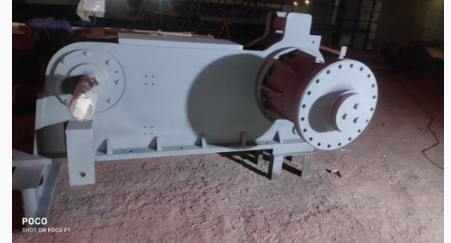




02

Mechanical Maintenance:

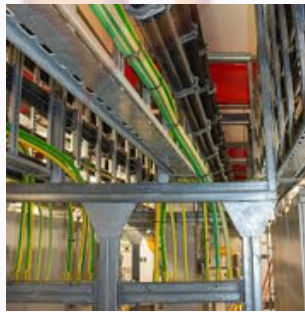
We offer a wide range of mechanical maintenance services, including equipment checks, repairs, and system upkeep. Our skilled team ensures reliable and efficient support to keep your operations running smoothly.



03

Electrical and Instrumentation Services:

We deliver professional electrical and instrumentation services, covering installation, maintenance, and calibration of electrical systems and control instruments. Our team ensures safe, efficient, and reliable system performance at all times.

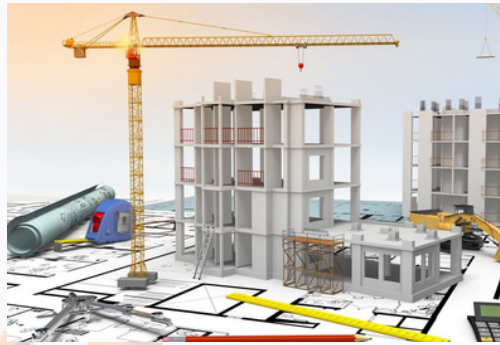




05

Civil Works:

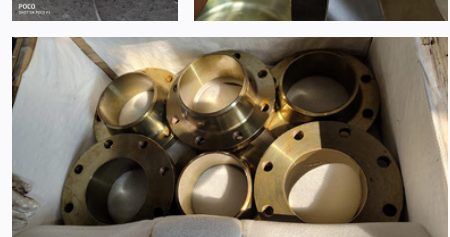
Our company delivers a wide range of civil engineering services, from initial site preparation to full-scale construction and ongoing infrastructure maintenance. We ensure each project is completed with precision, quality, and in line with industry standards.



06

General Trading Services:

Our company offers comprehensive general trading services, connecting clients with trusted suppliers and quality products across various industries. We manage sourcing, procurement, and delivery with efficiency and transparency. Our focus is on providing reliable solutions, competitive pricing, and timely service to meet the diverse needs of our customers.





RANGE

0.5 mm To 200 mm thick
in 1000 mm TO 2500
mm width & 2500 mm to
12500 mm length
available with NACE
MR01-75



STAINLESS STEEL PLATE

As per ASTM A240,
Gr.TP304, 304L, 304LN,
309, 309S, 309H, 310S,
310, 316, 316L, 316H,
316LN, 316Ti, 317, 317L,
321, 321H, 347, 348, 3487H,
409, 410, 420, 430 etc.



ALLOY STEEL PLATE

0.5 mm To 200 mm thick
in 1000 mm TO 2500
mm width & 2500 mm to
12500 mm length
available with NACE
MR01-75



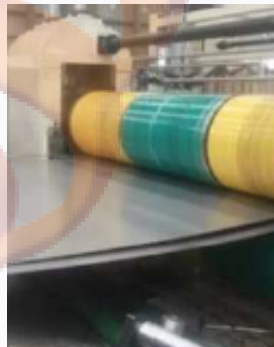
CARBON STEEL PLATE

As per IS 2062/ASTM A36,
Gr.A, B & C, IS 2002 Gr.1 &
2 ASTM A516 Gr.60 & 70,
ASTM A515
Gr.70



SPRING

0.5 mm To 200 mm thick
in 1000 mm TO 2500
mm width & 2500 mm to
12500 mm length
available with NACE
MR01-75



NICKEL ALLOY

Nickel Alloy: 201/2W
Monel Alloy: 400/K-500
Inconel: 600, 601, 625,
825, 800 / 800H / 800HT
Hastelloy: C22, C276, B-
2000



ALUMINIUM ALLOY

Aluminium Alloy: 1100,
2014, 2024, 3003, 5052,
5083, 6061, 6063, 6082,
7075, 8011, etc.



TITANIUM

Titanium: Gr.1, 2, 5, 7
Tantalum, SMO 254, Alloy
904L, Alloy 20, Alloy 330,
etc

DUPLEX

Duplex & Super Duplex:
UNS S31803, UNS
S32760, UNS-32750



FASTENERS DETAILS

- Product Range
- Hexagonal Head Screws - Metric
- Series - M3 To M56
- Hexagonal Head Screws - Inch Series
- - 3/16" X 2"
- Hexagonal Head Bolts - Metric Series
- - M3 To M56
- Hexagonal Head Bolts - Inch Series -
- 3/16" X 2"
- Socket Head Cap Screw - Metric
- Series - M3 To M24
- Socket Head Cap Screw - Inch Series
- - 3/16" X 1"
- Countersunk Head Cap Screw -
- Metric Series - M3 To M20
- Countersunk Head Cap Screw - Inch
- Series - 3/16" X 3/4"
- Button Head Cap Screw - Metric
- Series - M3 To M20
- Button Head Cap Screw - Inch Series -
- 3/16" X 3/4"
- Socket Set Screw - Metric Series -
- M3 To M20
- Socket Set Screw - Inch Series - 3/16"
- X 3/4"
- Mushroom Head Square Neck Bolt -
- Metric Series - M3 To M24
- Washroom Head Square Neck Bolt -
- Inch Series - 3/16" X 1"



INDUSTRIAL FLANGES

- Size Range: 1/2" (15 NB) to 48" (1200NB)
- Pressure Rating: 150#, 300#, 600#, 900#, 1500#, 2500#, PN6, PN10, PN16, PN25, PN40, PN64 etc.
- Standards: ANSI/ASME B16.5, B16.47 Series A & B, B16.48, BS4504, BS 10, EN- 1092, DIN, BS, GOST, MSS SP-44, ISO70051, JISB2220, BS1560-3.1, API7S- 15, API7S-43, API605
- Connection Type: Flat Face Flange (FF), Raised Face Flange (RF), Ring Joint Flange (RTJ), Lap Joint Flange, Male and Female Flange (M&F), Large and Small Tongueand-Groove Flange (T&G)
- MTC: As per EN 10204 3.2 and EN 10204 3.1, Test Certificates certifying NACE MR0175, NACE MR0103

FLANGES TYPE

- Weld Neck Flanges / Long Weld Neck
- Tongue and Groove Flange
- Slip On Flanges
- Spectacle Blind Flanges
- Socket Weld Flanges
- Blind Flanges
- Threaded Flanges
- Orifice Flanges
- High Hub Flanges
- Lap Joint Flanges
- Square Flanges
- Ring Type Joint Flanges
- Weldoflange
- Nipoflange
- Flangeolet
- Paddle Blind Flanges
- Ring Spacer Flanges





PIPES & TUBES

Outer Diameter: 1/8 NPS to 12 NPS (10.30 mm to 323.90mm) Wall Thickness: Sch 5s, Sch 10s, Sch 40s, Sch 80s, Sch 100, Sch 120, Sch 140, Sch 160, Sch XXS (1.24mm to 25.40mm) Length: Up to 12mtr long Specifications: ASTM, ASME, DIN EN (GERMAN), NF (AFNOR), JIS (JAPAN) Supply Condition: Solution Annealed & Passivated Types: Round | Rectangle | Square | Hydraulic | Coil | U Shape

- Stainless Steel
- Duplex Steel
- Super Duplex Steel
- Alloy Steel
- Carbon Steel
- LTCS
- Line Pipe
- Mild Steel
- Galvanized
- Copper Nickel
- Nickel Steel
- Monel Steel
- Hastelloy
- Alloy 20
- SMO 254
- Titanium
- Low Alloy Steel

BUTTWELD FITTING

Types: Elbow, Tee, Union, Cross, Coupling, Cap, Bushing, Plug, Swage Nipple, Welding Boss, Hexagon Nipple, Barrel Nipple, Welding Nipple, Parallel Nipple, Street Elbow, Hexagon Nut, Hose, Nipple, Bend, Adapter, Insert, Weldolet, Elbowlet, Sockolet, Thredolet, Nipolet, Letrolet, etc.



FORGED FITTING

Types: Elbow, Tee, Reducer, Return Bends, Stub-Ends, Cap, Collar, Cross, Insert, etc. Size: 1/4" NB TO 32" NB (Seamless & Welded) Wall Thickness: Sch 5S To Sch.XXS Stainless Steel: ASTM A403 WP304, 304L, 304H, 316, 316L, 317, 317L, 321, 310, 347, 904L

Carbon Steel: ASTM A234 WPB/A420 WPL3/A420 WPL6/ MSS-SP-75 WPHY 47/46/52/56/60/65/70 Alloy Steel: ASTM A234 WP1, WP5, WP9, WP11, WP22, WP91

Others: Monel, Nickel. Inconel, Hastelloy. Copper, Brass Bronze, Titanium, Tantalum, Bismuth, Aluminium, High Speed Steel, Zinc, Lead, etc.



Size: 1/4" NB To 4" NB (Socketweld & Threaded)

Class: 3000#, 6000#, 9000#

Stainless Steel: ASTM A182 F304, 304L, 304H, 316, 316L, 317, 321, 310, 347, 904L, etc

Carbon Steel: ASTM A105/A694 F42, 46, 52, 56, 60, 65, 70, A350 LF3, A350 LF2.

Alloy Steel: ASTM A182 F1, F5, F9, F11, F22, F91, etc.



ROUND BAR

Stainless Steel: 304/304L, 316/316L/316Ti, 321, 310/310S, 317/317L, 347, 17-4Ph, 15-5Ph, 904L, 410, 420, 430, 431, 430F, 416, 440C, etc.

Duplex: UNS 31803, 32205, 32750, 32760

Alloy Steel: F5, F9, F11, F22, F91

Other: Copper, Brass, Aluminium, Hastelloy, Titanium, Monel, Inconel, Nickel, Carbon Steel, Mild Steel, En Series, etc.

Specification: ASTM, AISI, ASME, DIN, UNS

Condition: Forged, Annealed, Picked, Hot Rolled, Cold Rolled

Size: 5mm Dia up to 350mm Dia

CHANNEL / ANGLE

Stainless Steel: 304/304L, 316/316L, 321, 310/310S, 317/317L, 347, 17-4Ph, 15-5Ph, 904L, 410, 420, 430, 431, 430F, 416, 440C, etc

Duplex Steel: UNS 31803, 32205, 32750, 32760

Alloy Steel: F5, F9, F11, F22, F91

Other: Copper, Brass, Aluminium, Hastelloy, Titanium, Monel, Inconel, Nickel, Carbon Steel, Mild Steel, EN Series, etc.

Specifications: ASTM, AISI, ASME, DIN, UNS

Sizes of Angles: 20mm to 150mm, in Thk = 3mm to 12mm

Sizes of Channels: 20mm to 500mm, in Thk = 3mm to 50mm



CONICAL STRAINERS



Conical strainers, also known as temporary cone strainers, are used to filter debris from pipelines, especially during commissioning and start-up. They are typically installed between flanges and can be removed After the system is operational.

Key Features of Conical Strainers:

1. Material:

Carbon Steel, Stainless Steel (304, 316), Low Alloy Steels
custom materials as per client specifications.

2. Size:

Available up to 24 inches (or customized as required by the client).

3. Pressure Rating:

Available up to 3000 class (or as per client requirements).

4. Specifications:

Can be customized in size and design according to the client's requirements.
Typically designed to meet ASME standards or equivalent.

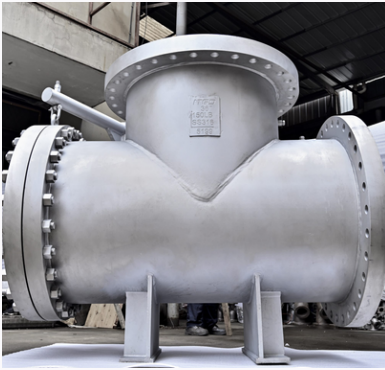
5. Applications:

Used in oil & gas, chemical, and process industries to prevent contamination during initial piping start-up by filtering out particles.

Conical strainers are often used as a temporary solution until permanent filtration systems are in place



TEE STRAINERS



TEE strainers are a type of pipeline strainer designed in a T-shape to filter out unwanted debris from the fluid flow. They are commonly used in various industries such as oil and gas, chemical processing, and water treatment, providing protection to pumps, valves, and other equipment from damage caused by particulates.

Key Features of TEE Strainers:

1. Material:

Carbon Steel, Stainless Steel (304, 316), Low Alloy Steels, Custom materials as per client specifications.

2. Size:

Available up to 24 inches (customizable as needed).

3. Pressure Rating:

Rated up to 3000 class, or as per specific project needs.

4. Specifications:

Can be tailored to specific applications, including flow rates, filtration needs, and pressure.

Built according to ASME or equivalent standards.

5. Applications:

Used in systems that require filtration to protect downstream equipment.

Applicable in industries like petrochemical, power generation, water treatment, and oil and gas

Y-STRAINERS

Y-Strainers are essential components in piping systems, designed to filter out debris and protect downstream equipment such as pumps, valves, and regulators. They are commonly used in industries like oil and gas, chemical processing, water treatment, and HVAC systems.

Key Features of Y-Strainers:

1. Material:

Carbon Steel

Stainless Steel (304, 316)

Low Alloy Steels

Custom materials as per client specifications.

2. Size:

Available up to 24 inches or as specified by the client.

3. Pressure Rating:

Rated up to 3000 class, or tailored as per project needs.

4. Design Specifications:

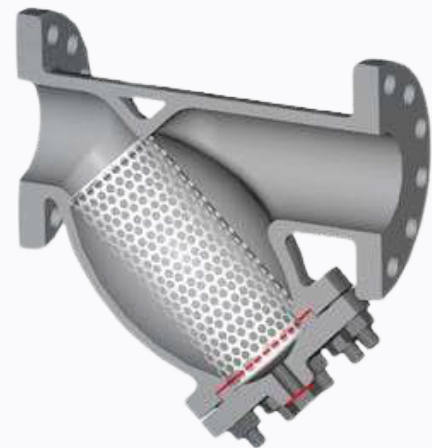
Filtration Element: Removable screen to trap solids and particulates.

Orientation: The strainer body forms a Y-shape, allowing debris to settle in the pocket, which can be cleaned out periodically.

Customization: Size, mesh type, and flow rate designed to meet specific client requirements. Meets ASME or equivalent standards for pressure and design.

5. Applications:

Protects pumps, valves, flow meters, and other critical equipment from damage caused by foreign particles in the flow. Widely used in fluid and gas systems across industries





CARTRIDGE FILTERS

Cartridge filters are used for fine filtration in various industries, cartridge filters are used for fine filtration in various industries, removing contaminants from liquids or gases. They consist of a housing and a filter element made from a variety of materials. These filters are commonly used in water treatment, chemical processing, pharmaceuticals, and food and beverage industries.

Key Features of TEE Strainers:

1. Material:

- Filter Media: Fiberglass, Nylon, Polypropylene, Cotton, Paper, Fuller's Earth, Activated Carbon
- Filter Elements: Made from materials such as paper, wire mesh, fiber, or cloth

2. Filtration Efficiency:

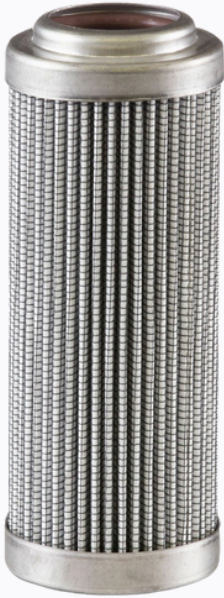
Capable of filtering particles as fine as 0.2 microns, providing excellent protection against contaminants.

3. Design and Customization:

- Filter elements are customized to meet client specifications.
- Designs are made to suit specific machinery or plant equipment.
- Samples and drawings can be used to create filters according to custom requirements.

4. Applications:

- Widely used in liquid and gas filtration systems.
- Suitable for industries like pharmaceuticals, food and beverage, petrochemicals, water treatment, and more.
- Filters contaminants from water, chemicals, oils, gases, and other fluids.



BALL VALVES

1. Material Specifications:

- Stainless Steel: Options include grades like 304, 316, and others depending on corrosion resistance and strength needs.
- Carbon Steel: Suitable for high-pressure applications where weight and cost are considerations.
- Brass or Alloy Steel: Used in specific applications based on fluid compatibility and environmental conditions.

2. Size and Dimensions:

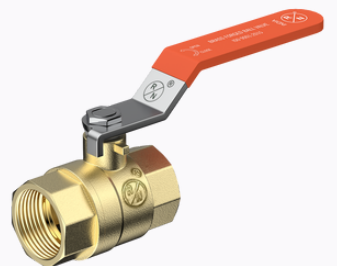
- Diameter: Options available from 1 inch to 24 inches or more, based on the flow requirements.
- Flange Standards: Customized to fit different flange standards (e.g., ANSI, DIN, JIS) based on client piping systems.
- Thickness: Custom thicknesses may be requested for the valve body and flanges.

3. Pressure Ratings:

Valves can be manufactured to specific pressure ratings (e.g., 150#, 300#, 600#, or up to 3000#), tailored to client application requirements.

4. End Connections:

Options for welded, threaded, or flanged connections depending on installation preferences and piping system design.





GATE VALVES

We offer a comprehensive range of gate valves designed to meet the specific needs of our clients across various industries. Our gate valves are customizable in several key areas:

1. Material Specifications:

- Grades: Options include 304, 316, 316L, and duplex stainless steel for superior corrosion resistance and durability.
- Carbon Steel: Commonly used for high-pressure applications, offering strength and affordability.
- Alloy Steel: Tailored for applications requiring higher heat resistance and strength.
- Brass or Bronze: Suitable for non-corrosive fluids, often used in lower-pressure applications.

2. Size and Dimensions:

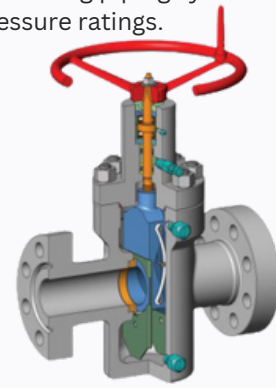
- Diameter: Available sizes typically range from 1 inch to 36 inches or larger based on client requirements.
- Body Style: Options for rising stem or non-rising stem designs to accommodate different installation environments.
- Flange Standards: Customized to fit standards such as ANSI, DIN, or JIS to match existing piping systems.
- Thickness: Customizable thickness for the body and flanges to handle specific pressure ratings.

3. Pressure Ratings:

Manufactured to meet specific pressure ratings, including: 150#, 300#, 600#, 1500#, 2500#, or as per client specifications.

4. End Connections:

- Welded Connections: For permanent installations.
- Threaded Connections: Ideal for ease of assembly and maintenance.
- Flanged Connections: Customized to fit client piping systems.



BUTTERFLY VALVES

1. Size Range:

- Typical Sizes: Ranges from 2" (50 mm) to 24" (600 mm), with smaller and larger sizes available based on manufacturer specifications.

2. Body Material:

- Cast Iron: Common for general applications due to cost-effectiveness and good strength.
- Ductile Iron: Enhanced toughness and strength compared to cast iron; often used in water and wastewater applications.
- Carbon Steel: Suitable for high-temperature and pressure applications.
- Stainless Steel (304/316): Excellent corrosion resistance; ideal for food and chemical processing.
- PVC/CPVC: Used for corrosive chemical applications; lightweight and easy to install.

3. Disc Material:

- Ductile Iron: Often coated with an epoxy or nickel finish for enhanced corrosion resistance.
- Stainless Steel (304 or 316): Durable and resistant to corrosion; suitable for harsh environments.
- Aluminum Bronze: High resistance to corrosion, especially in marine applications.

4. Seat/Liner Material:

- EPDM: Good for water, steam, and some chemicals; resistant to ozone and UV radiation.
- NBR (Buna-N): Suitable for oil, gas, and other hydrocarbons.
- PTFE (Teflon): Exceptional chemical resistance; used for aggressive chemicals.
- Viton: Excellent for high-temperature and aggressive chemical applications.

5. Pressure Rating:

- PN10/PN16 (150 psi to 250 psi): Standard pressure ratings for most applications.
- Higher ratings (e.g., PN25, PN40): Available for specific requirements.





GLOBE VALVES

Globe valves are widely used for regulating flow in pipelines, making them ideal for applications where throttling is needed. Their design allows for precise control of flow, pressure, and temperature. Below are the details and specifications for globe valves:

1. Size Range:

- Typically available in sizes from 1/2" to 24" (DN 15 to DN 600).
- Larger sizes can be custom made depending on the application.

2. Pressure Ratings:

- Pressure classes generally range from 150# to 2500# (PN 10 to PN 420).
- Valves with higher pressure ratings are available for high-pressure applications in power generation, chemical, and oil & gas industries.

3. Material Specifications:

- Body Materials:
 - Carbon Steel: ASTM A216 WCB (for general-purpose applications)
 - Stainless Steel: 304, 304L, 316, 316L (for corrosive environments)
 - Alloy Steel: ASTM A217 WC6, WC9, C12 (for high-temperature services)
 - Bronze and Brass: Used in smaller sizes and lower-pressure applications
 - Duplex & Super Duplex Stainless Steel: For highly corrosive or high-pressure applications
 - Monel, Inconel, Hastelloy, Titanium: For specialized, highly corrosive, or high-temperature applications
- Seating Materials:
 - Metal Seats: For high-temperature and high-pressure applications
 - Soft Seats: PTFE, Teflon, or other polymers for tight sealing in lower pressure or non-abrasive services

4. Valve Design Types:

- T-Pattern Globe Valve (Z-type): The most common type with the lowest pressure drop. Suitable for on/off or throttling services.
- Y-Pattern Globe Valve: Offers less flow resistance and is used for applications where pressure drop is a concern.
- Angle Pattern Globe Valve: Allows a 90-degree change in flow direction, typically used for applications involving pulsating flows or where space is limited.

5. Flow Characteristics:

- Globe valves provide linear flow characteristics, allowing precise control over fluid flow.
- The design ensures that the valve opens gradually, making it suitable for throttling.
- The flow direction is generally over the disc for low-pressure applications and under the disc for high-pressure applications to reduce damage to the disc and seat.

6. End Connections:

- Flanged Ends: ASME, ANSI, DIN, and EN standards.
- Threaded Ends: NPT, BSP, BSPT, and BSPP threads are available for smaller valves.
- Butt Weld Ends: Suitable for high-pressure or high-temperature applications.
- Socket Weld Ends: For smaller, high-pressure applications.



SAFETY RELIEF VALVES

1. Types of Safety Relief Valves

- a. Conventional Safety Relief Valves:
 - Operation: Opens to relieve pressure when the set pressure is exceeded and closes when the pressure returns to a safe level.
 - Applications: Used in various industries for gas and liquid service.
- b. Balanced Bellows Safety Relief Valves:
 - Design: Features a bellows assembly that balances the inlet pressure against the valve seat.
 - Advantages: Reduces the effect of back pressure on the valve, ensuring accurate performance.
- c. Pilot-Operated Safety Relief Valves:
 - Operation: Uses a pilot valve to control the main valve, providing more precise pressure control.
 - Applications: Ideal for high-pressure systems or where very low leak rates are required.

2. Material Specifications

- Common Materials:
 - Body Materials:
 - Carbon Steel: Cost-effective and suitable for many applications.
 - Stainless Steel: Offers excellent corrosion resistance, suitable for aggressive environments.
 - Alloy Steel: Used for high-temperature applications.
 - Seals and Gaskets:
 - PTFE: For chemical resistance.
 - Rubber: For general applications.

3. Size and Dimensions

- Diameter:
 - Available Sizes: Typically ranges from 1/2 inch to 12 inches or larger, depending on the application.
- Body Style:
 - Configurations: Available in threaded, flanged, or welded designs for easy integration into existing systems.

4. Pressure Ratings

- Typical Ratings: Manufactured to meet various pressure ratings, commonly including:
 - ASME Section VIII: Suitable for most industrial applications.
 - API Standards: For oil and gas industry applications.
- Set Pressure Range: Customizable to meet specific application needs, typically up to 3000 psi or more.

5. End Connections

- Connection Types:
 - Threaded Connections: Standard for smaller valves.
 - Flanged Connections: Common for larger valves, ensuring secure attachment.
 - Welded Connections: Used for permanent installations.



CONTROL VALVES

Technical Specifications

1. Size Range:

- Standard sizes typically range from 1/2" to 36" (or larger depending on design).

2. Pressure Ratings:

- ANSI Class ratings: 150, 300, 600, 900, 1500, 2500
- DIN ratings: PN10, PN16, PN25, PN40, etc.

3. Flow Coefficient (Cv):

- A measure of the flow capacity of the valve, indicating how much flow (in gallons per minute) can pass through the valve at a specific pressure drop.

4. Temperature Range:

- Generally from -50°F to 800°F (-45°C to 427°C), depending on materials and design.

Control Modes:

- Proportional Control: Adjusts flow based on the deviation from a setpoint.
- Integral Control: Corrects the steady-state error by integrating the error over time.
- Derivative Control: Anticipates future errors based on the rate of change.

Applications and Use Cases

- Process Control: Used in various industries to regulate flow, pressure, temperature, and level.
- HVAC Systems: Control air flow and temperature in heating and cooling systems.
- Water Treatment: Control the flow of chemicals and water in treatment plants.
- Oil & Gas: Regulate the flow of crude oil, natural gas, and refined products.

Standards and Certifications

- Manufacturing Standards: Comply with ANSI/ISA, ASME, API, and ISO for design and testing.
- Material Certifications: Compliance with ASTM and other relevant material standards.



CHECK VALVE

1. Types of Check Valves

a. Swing Check Valves:

Design: Utilizes a disc that swings on a hinge to allow forward flow and close against backflow.

Applications: Commonly used in water and wastewater systems, fire protection systems, and HVAC.

b. Lift Check Valves:

Operation: Features a disc that lifts off the seat to allow flow and drops back down to prevent backflow.

Advantages: Suitable for vertical or horizontal applications, offering better sealing in high-pressure systems.

c. Dual Plate Check Valves:

Design: Consists of two plates that pivot on a central pin, providing a quick response to changes in flow direction.

Applications: Often used in high-flow and high-pressure systems, including oil and gas pipelines.

d. Ball Check Valves:

Operation: A ball sits in a seat and allows flow when pressure is applied; it drops back to seal the opening when flow reverses.

Uses: Ideal for low-pressure applications, such as in water and sewage systems.

e. Wafer Check Valves:

Design: Compact design that fits between flanges, making them suitable for tight spaces.

Applications: Used in various industries for fluid handling.

2. Material Specifications

• Common Materials:

- Body Materials:
 - Stainless Steel: Offers excellent corrosion resistance, suitable for aggressive environments.
 - Carbon Steel: Cost-effective for standard applications.
 - PVC or CPVC: Used for chemical applications where metal may corrode.
- Seals and Seats:
 - PTFE: Chemical resistance for various applications.
 - Rubber or EPDM: Good sealing properties for general applications.

3. Size and Dimensions

• Diameter:

- Available Sizes: Typically ranges from 1/2 inch to 24 inches or larger based on client requirements.

• Body Style:

- Configurations: Available in flanged, threaded, or welded designs for integration into existing systems.

4. Pressure Ratings

- Typical Ratings:** Manufactured to meet various pressure ratings, commonly including:

- 150#, 300#, 600#, or as per client specifications.

- Set Pressure Range:** Customizable to meet specific application needs.

5. End Connections

• Connection Types:

- Threaded Connections: Standard for smaller valves.
- Flanged Connections: Common for larger valves, ensuring secure attachment.
- Welded Connections: Used for permanent installations.



07

Manpower Supply:

We supply both skilled and unskilled manpower for a wide range of projects across various sectors. Our workforce is well-trained, experienced, and available on short notice –whether for long-term assignments or short-term needs.





A Fabrication Profile

Lana Al-Arabia Contracting Est. is a trusted and well-established contracting company in the Kingdom of Saudi Arabia. We provide specialized services across key sectors, including Oil & Gas, Petrochemicals, Fertilizers, Cement, Water Desalination, Mining, and Power. Our expertise lies in delivering end-to-end project execution and industrial support services, tailored to meet the unique requirements of each client.

Lana Al-Arabia Contracting Est. is recognized for its strong capabilities in:

- Piping and Mitre Fabrication
- Structural Steel Fabrication
- Installation of Mechanical Equipment
- Industrial Maintenance and Shutdown Services

In addition to our core services, Lana Al-Arabia Contracting Est. provides complete design, fabrication, and installation solutions that ensure smooth project execution and high operational efficiency.

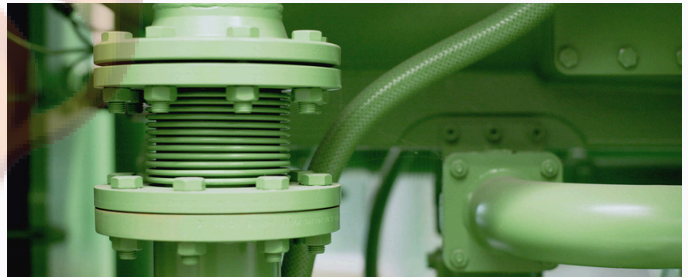


We are committed to safety, quality, and continuous innovation, always aiming to exceed client expectations. By delivering reliable and cost-effective services, we build long-term partnerships based on trust. Our strong understanding of complex industrial needs allows us to complete projects on time, within budget, and in full compliance with the highest industry standards.

B Piping and Spool Fabrication

Pipes and fittings are vital elements in any piping system, enabling the safe and efficient transport of fluids, gases, or solids. Pipes serve as the main channels, while fittings are used to join sections, adjust flow direction, or control flow rate.

Together, they form the foundation of industrial piping networks, playing a critical role in sectors such as Oil & Gas, Petrochemicals, and Water Desalination by ensuring reliable and effective material movement.



A step coupling is designed to connect two pipes of different diameters. Made from flexible, durable materials—often reinforced with metal or plastic bands—it can easily adapt to various pipe sizes and materials. Step couplings are widely used in plumbing, drainage, and industrial systems, providing a secure, leak-proof connection between mismatched pipes. They are easy to install, cost-effective, and can compensate for minor pipe misalignments.

C Mitre Fabrication



A mitre bend, on the other hand, is formed by cutting pipe segments at precise angles and welding them together to create a sharp change in direction within the piping system.



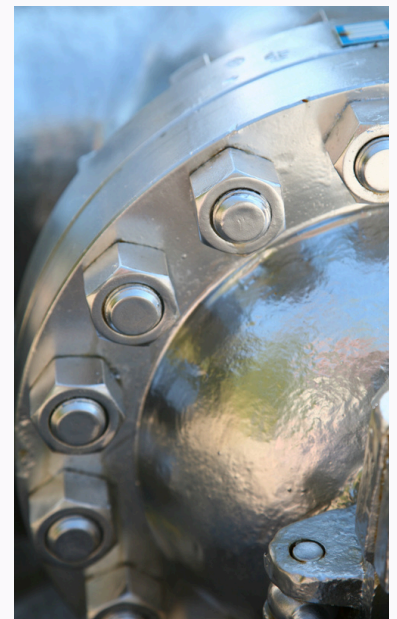
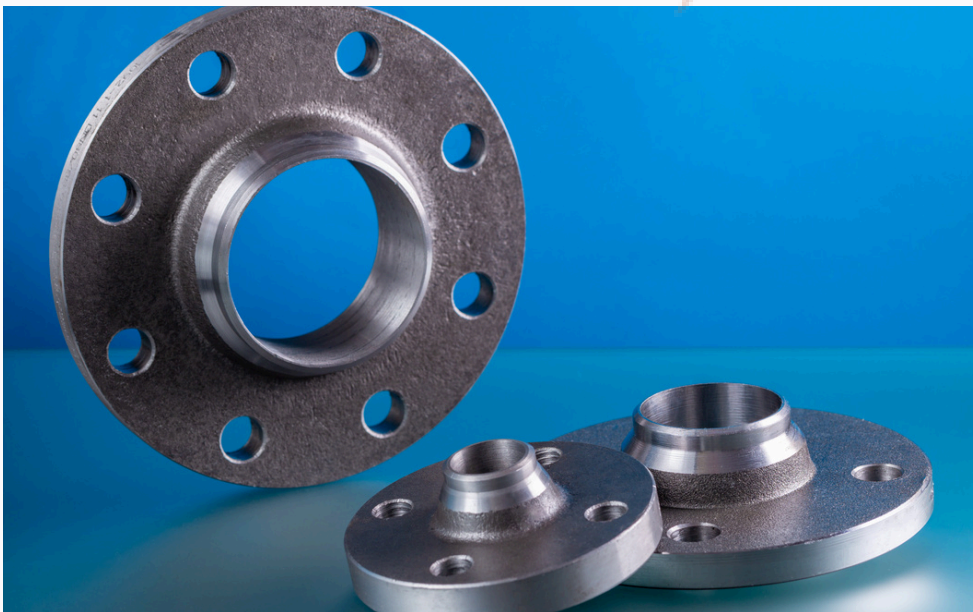
D Erection of Equipment Steel Structure

Mitre bends are pipe fittings created by cutting straight pipe sections at specific angles and welding them together to form a bend. Unlike smooth radius bends, mitre bends consist of sharp-angled connections—usually in 45° or 90° increments. They are ideal for situations where large-radius bends are not practical or when space limitations demand tight directional changes within a piping system.



E General Trading

Flanges are crucial components in piping systems, used to connect pipes, valves, pumps, and other equipment. They offer a strong yet detachable connection, making assembly, disassembly, maintenance, and inspection easy and efficient. Flanges are typically joined with bolts and sealed with a gasket to prevent leaks. Due to their strength and adaptability to different pressures and temperatures, flanges are widely used in industries such as Oil & Gas, Power, and Petrochemicals.





SAFETY POLICY

The Safety Department at Lana Al-Arabia Contracting Est. is fully committed to creating and maintaining a safe working environment for all employees. Our goal is to prevent accidents, minimize injury risks, and protect both people and property across all work sites.

We focus on identifying and eliminating potential hazards, ensuring a healthy, hazard-free workplace where safety is a shared responsibility. Employees are encouraged to actively participate in safety practices and openly communicate ideas and concerns to strengthen our safety culture.

In addition to jobsite safety, we promote safety awareness beyond work by offering guidance and training that help our team protect themselves and their families during off-duty hours.

Before starting any task, safety procedures are reviewed and reinforced to ensure full understanding and compliance.

At Lana Al-Arabia Contracting Est., our safety approach includes:

- Job-specific risk assessments before every task
- Regular orientation programs for all workers
- Weekly safety audits and compliance tracking
- Frequent safety meetings to address challenges and improvements
- Daily toolbox talks, led by the Safety Officer, to address immediate jobsite risks



We are committed to continuous improvement, maintaining high safety standards to ensure a secure, productive environment for everyone involved in our operations.





QUALITY STATEMENT

We consider quality management and its related objectives as a core value embedded in every function of our organization. Our Integrated Management System (IMS), covering Quality, Health, Safety, and Environment (QHSE), is based on internationally recognized standards: ISO 9001:2015 for Quality Management, ISO 45001:2018 for Occupational Health and Safety, and ISO 14001:2015 for Environmental Management. This system reflects our commitment to excellence and accountability.

We are flexible in adopting and adhering to our clients' specific QHSE requirements, aligning them with our own robust management framework. All our employees are thoroughly trained in QHSE activities in accordance with the IMS, and we ensure that our subcontractors and suppliers meet proven QHSE standards as part of their qualification process.

With an efficient management team and structured policies, we continuously drive improvement while maintaining cost-effectiveness. Regular internal and external audits are conducted to ensure compliance with our established QHSE procedures and standards.

Board meetings, performance reviews, and team briefings consistently reinforce the importance of total quality management. As a result, continuous improvement is deeply rooted in our core work culture.





SAFETY STATEMENT

Lana Al-Arabia Contracting Est. is fully committed to protecting the health, safety, and well-being of all employees, resources, property, and stakeholders, while also preventing environmental pollution. Our focus is on continuous improvement in Health, Safety, and Environmental (HSE) performance to reduce risks and minimize environmental impact related to our construction operations.

To uphold this commitment, we will:

- Provide and maintain safe and healthy working conditions for all.
- Implement strong programs for incident prevention and environmental protection.
- Ensure our activities do not pose harm to people or the environment—whether directly or indirectly.

Line managers hold the primary responsibility for safeguarding the health, safety, and environmental welfare of our workforce. However, every employee also shares the duty to work safely and follow company policies and standards.

The principle "Safety First" will be promoted to everyone working under our control, ensuring they understand and act on their personal responsibilities toward Health, Safety, and Environmental care.





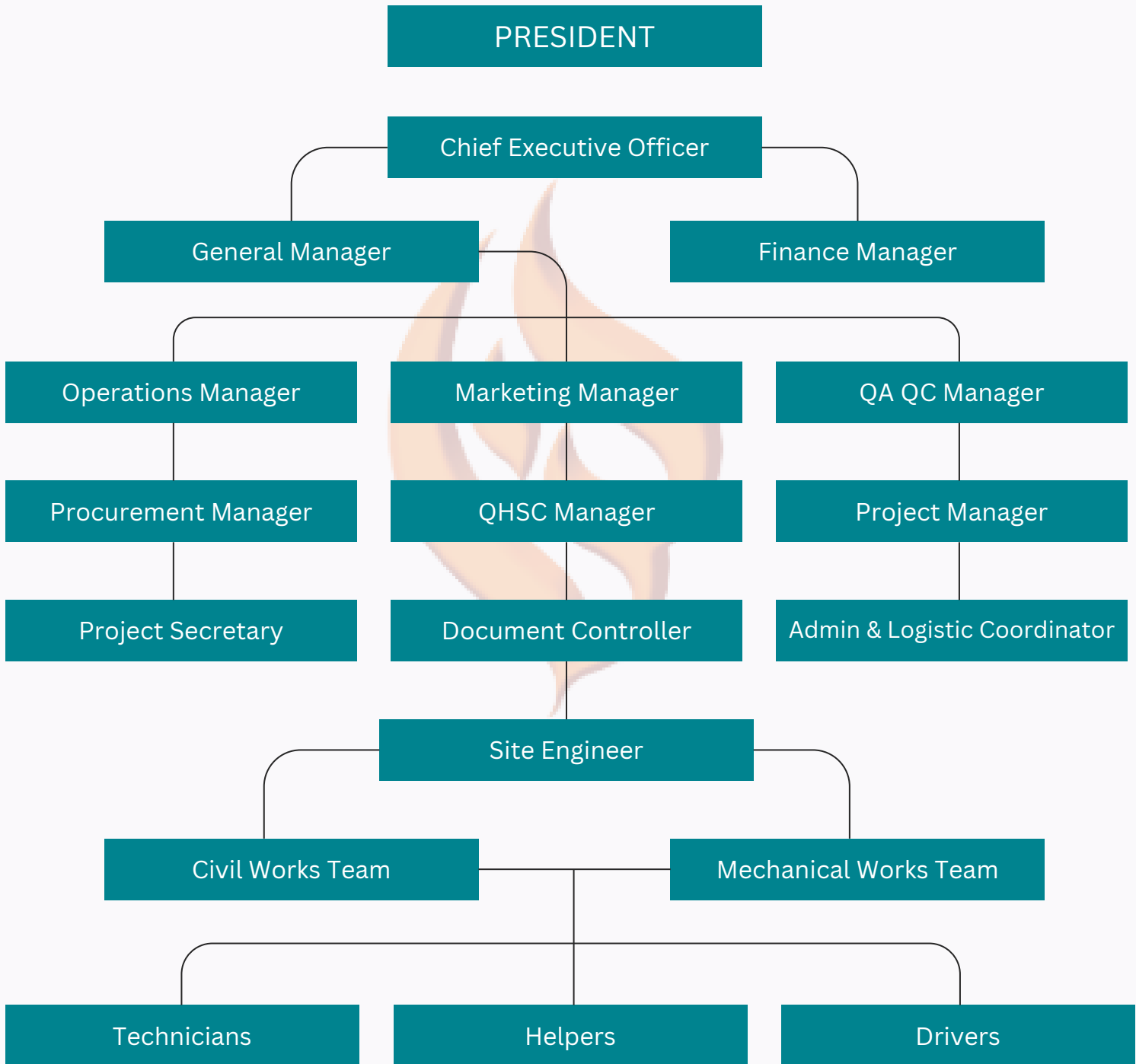
OUR RECENT CLIENTS

We take pride in delivering high-quality industrial services to a wide range of clients across various sectors. Our expertise includes fabrication, scaffolding solutions, blasting and painting, machining, plant maintenance, electrical services, manpower supply, and general trading. Over the years, we have built strong, lasting relationships by consistently providing reliable, efficient, and results-driven solutions tailored to meet each client's unique needs.





ORGANISATION CHART



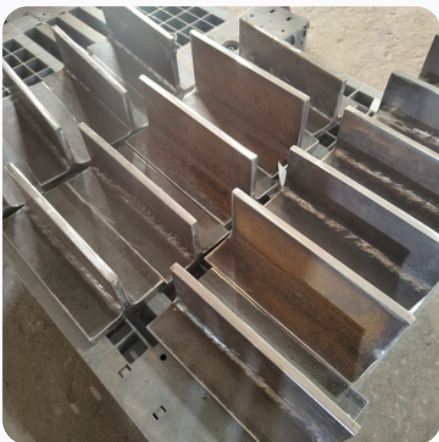


PROJECT GALLERY





PROJECT GALLERY

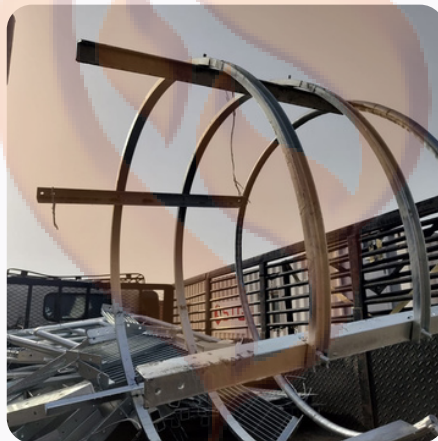




مؤسسة لنا العربية للمقاولات العامة
LANA AL-ARABIA CONTRACTING EST.

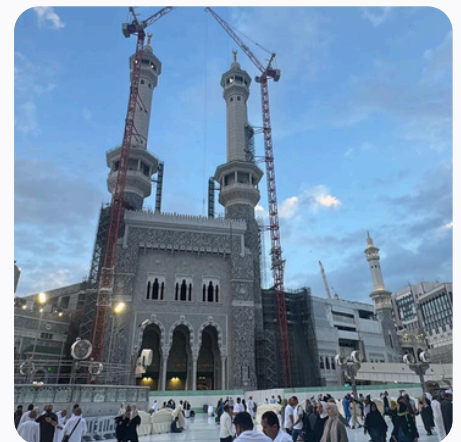
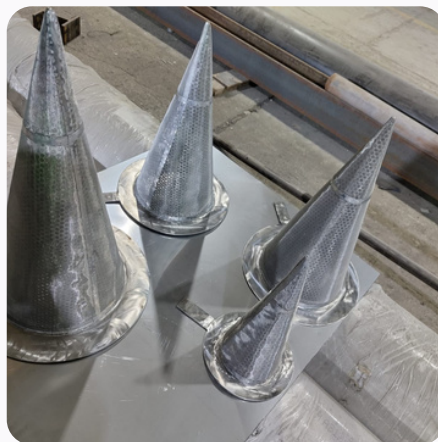
VAT No. 300396617500003 - C.R. 2055010787 - C.C. 162072

PROJECT GALLERY





PROJECT GALLERY





LICENSES & CERTIFICATION



السجل التجاري : 2055010787

رمزك التجاري QR Code

من خلاله يمكنك التحقق المباشر من المعلومات:

- السجل التجاري
- شهادة السعودة
- شهادة الزكاة
- رخصة البلدية
- برنامج نطاقات
- الغرفة التجارية

وزارة التجارة
Ministry of Commerce

VISION رؤية 2030
المملكة العربية السعودية
Kingdom of Saudi Arabia

MCgovSA
www.mc.gov.sa

الرقم الموحد : ٧٠١٤٩٨٢٠٨١

رقم المنشأة : ٢٠٥٥٠١٠٧٨٧

التاريخ : ١٤٢٩/٠٥/٠٢ هـ

شهادة تسجيل مؤسسة فردية

Individual Establishment Registration Certificate

وزارة التجارة
Ministry of Commerce

مؤسسة لنا العربية للمقاولات العامة

الاسم التجاري للمؤسسة : **مركزها الرئيسي : الجبل - شارع الأمير مساعد**

هاتف : **الرمز البريدي :**

إسم الناظر : **سعد بن صالح بن راضي العميري الخالدي**

الجنسية : **سعودي** تاريخ الميلاد : **١٣٩٣ هـ**

رقم السجل المدني - الإقامة : **١٠٠٩٥١٩٧٧٦** تاريخه : **١٤٠٩/١١/٢٣ هـ** مصدره : **الجبل**

رقم الحافظة - الدوا : **٩٣٨٧** تاريخه : **١٤٠٩/١١/٢٣ هـ** مصدره : **الجبل**

النشاط : **للاطلاع على بيانات الأنشطة الرجاء مسح الرمز التجاري**

رأس المال : **٢٥٠٠٠** خمسة وعشرون ألف ريال فقط لا غير

إسم المدير أو الوكيل المفوض : **سعد بن صالح بن راضي العميري الخالدي**

الجنسية : **سعودي** تاريخ الميلاد : **١٣٩٣ هـ**

رقم السجل المدني - الإقامة : **١٠٠٩٥١٩٧٧٦** تاريخه : **١٤٠٩/١١/٢٣ هـ** مصدره : **الجبل**

سلطات المدير :

يشهد مكتب السجل التجاري بمدينة : **الجبل** بأنه تم تسجيل المؤسسة المذكورة أعلاه بمدينة : **الجبل**

وتنتهي صلاحية الشهادات في : **١٤٤٨/٠٣/١٢ هـ** بموجب الإيصال رقم : **٣٢٤٥٠٢** وتاريخ : **١٤٣٤/٠٥/١٩ هـ**

يتم التحقق من صحة هذه الشهادة بالتدقيق على : <http://mc.gov.sa>

+966 11 294 4444 | الرياض 11162 | Kingdom of Saudi Arabia | المملكة العربية السعودية | www.mc.gov.sa | MCgovSA



LICENSES & CERTIFICATION



السادة/ مؤسسة لنا العربية للمقاولات العامة

نهنكم بدخول عالم الأعمال التجارية وإصدار سجلكم التجاري، ونتطلع أن يساهم هذا السجل في تحقيق تطلعاتكم، وأن يكتب الله لكم التوفيق والنجاح في عملكم التجاري وأن تكون شريكاً في تعزيز اقتصاد المملكة العربية السعودية.
يسرنا إبلاغكم بأن رقم منشآتكم الموحد هو ٧.١٤٩٨٢.٨١ وقد تم ربطه بالخدمات الحكومية التي ستحتاجها مستقبلاً. وهي على النحو التالي:

الرقم:	رقم سجلكم التجاري للمنشأة	
٢.٥٥.١.٧٨٧		
١٤٨.٧	رقم منشآتكم لدى وزارة الموارد البشرية والتنمية الاجتماعية	
١.٨٤٥٦.٣٢	تم تسجيل منشآتكم مجاناً لمدة سنة في خدمة واصل التجاري	
٣.٣٩٦٦١٧٥	رقم منشآتكم لدى هيئة الزكاة والضريبة والجمارك	
٥.٣٤٧٥٢٥١	رقم منشآتكم لدى المؤسسة العامة للتأمينات الاجتماعية	
١٦٢.٧٢	رقم منشآتكم لدى الغرفة التجارية.	
لا يوجد	رقم رخصة "بلدية" فورية (في حال اختياركم)	



يُتيح تطبيق "نوافذ منشآت" العديد من الخدمات الممكنة لك في عالم الأعمال ومنها الحصول على الإرشاد والاستشارات، تطبيق "نوافذ منشآت" بوابة دخولك إلى عالم الأعمال. <https://www.monshaat.gov.sa/nawafth>



ويمكنك فتح حساب بنكي دون الحاجة إلى أي أختام لمنشأتك

كما جمعنا لك كافة الانظمة واللوائح بلغة بسيطة في دليل التاجر لتمارس عملك التجاري بسهولة mc.gov.sa/trader/guide





CERTIFICATION

أرامكو السعودية
saudi aramco



SAUDI ARAMCO Vendor Number

September 22, 2016

YOUR SAUDI ARAMCO VENDOR
REGISTRATION NUMBER: 10058912

LANA AL-ARABEH GENERAL CONTRACTING EST.
P.O.BOX.51
Jubail 2198
Saudi Arabia

Gentlemen;

Thank you for your interest in providing contract services to Saudi Aramco. Your new contractor registration application has been approved and your Company has been assigned the following Vendor Number:

YOUR ASSIGNED SAUDI ARAMCO VENDOR NUMBER: 10058912

(Please note this Vendor Number for your future reference.)

A unique username and temporary password will be sent to each of your Company's Designated Contacts (as specified in your registration application) to enable them to access Saudi Aramco's Electronic Contracting Network (ECN). ECN is accessible through the Saudi Aramco Portal at <http://vendor.aramco.com>.

It is important to note that this registration merely provides Saudi Aramco with current contact and other basic information about your Company. This registration is different from contractor prequalification which is performed separately in connection with a specific contract or group of similar contracts. The method Saudi Aramco uses to prequalify and select bidders for each contract depends on the contract's complexity and urgency in addition to the number of potentially qualified contractors for the required work. The most important source of contractor information that Saudi Aramco will heavily rely on is each registered contractor's Contractor Profile in ECN, which each contractor can update themselves online and at any time.

Therefore, the most important step for your Company to take immediately after receiving your ECN usernames and passwords is to promptly complete the remaining sections of your Contractor Profile in ECN. These sections include:

- * Introduction
- * Work Experience
- * Certificates
- * Human Resources
- * Equipment
- * Branches / Camps / Laydown Yards
- * Financial Information
- * Parent Company / Affiliates / Subsidiaries / Sole Agency Agreements





مؤسسة لنا العربية للمقاولات العامة
LANA AL-ARABIA CONTRACTING EST.

VAT No. 300396617500003 - C.R. 2055010787 - C.C. 162072

THANK YOU

We appreciate your interest in our services and capabilities.
Our team is ready to support your goals with commitment and expertise.
Let's build a successful partnership together.



Al-Jubail, Prince Musaed St., Kingdom of Saudi Arabia



+966-594526244



lanaarabiaksa.com



sales@lanaarabiaksa.com

رؤية
VISION
2030
المملكة العربية السعودية
KINGDOM OF SAUDI ARABIA